

Courses & Distances
up Tioga

State of New York

S 31 W 65

S 48 W 80

S 53 W 68

N 80 W 61

S 68 W 40

S 52 W 68

S 85 W 32

N 57 W 20

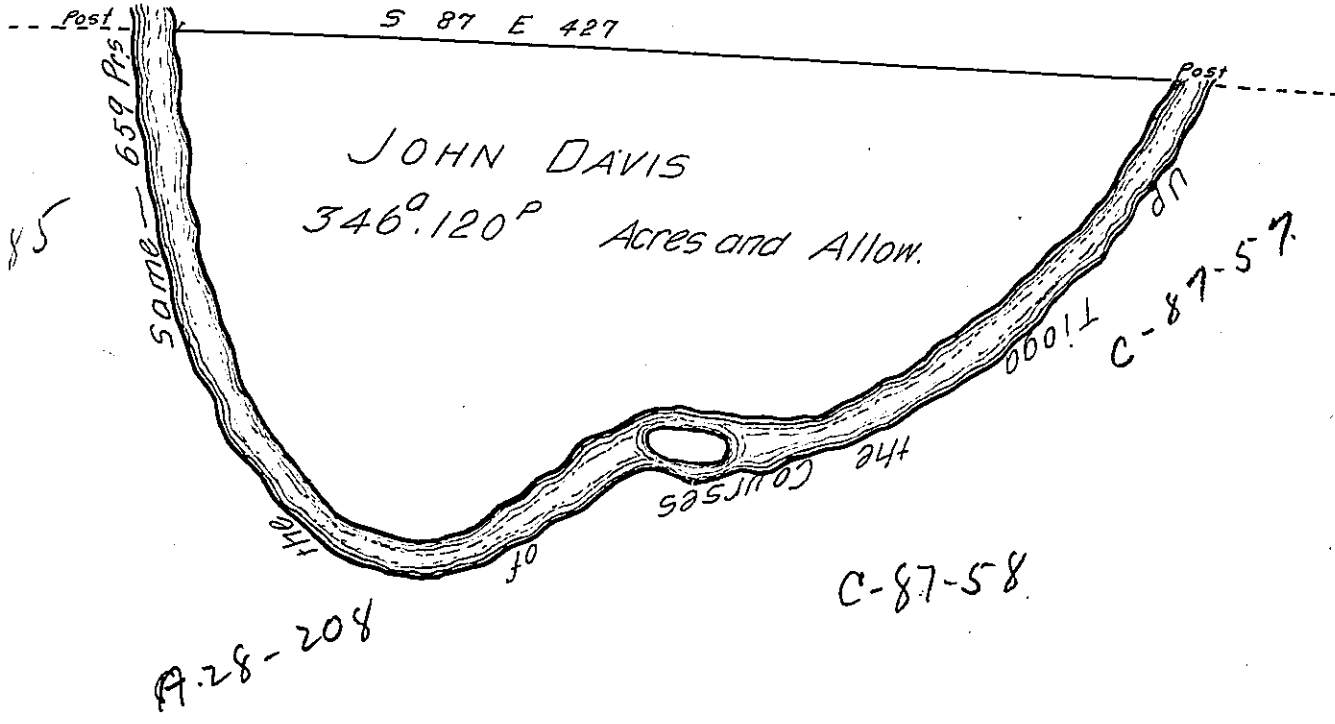
N 41 W 68

N 15 W 80

N 9 W 62

N 27 W 20

659



The Draught of a Tract of Land called _____ situate between a Bend of
 the Tioga and the Line of the State of New York in the County of Luzerne
 containing Three hundred forty Six Acres ^{120 perches} with the usual Allowance for Roads,
 Survey'd the second day of October Anno Dom: 1786 In Pursuance of a
 Warrant to John Davis Bearing Date at Philad^a the seventeenth day of
 May Anno Dom. 1785 N^o 267.

P. W^m Macloy D.S.

To John Lukens Esq^r }
 S G of Pennsylvania }

IN TESTIMONY that the above is a copy of the original remaining on file in
 the Department of Internal Affairs of Pennsylvania, made
 conformably to an Act of Assembly approved the 16th day of
 February, 1833, I have hereunto set my Hand and caused
 the Seal of said Department to be affixed at Harrisburg,
 this twentieth day of June 1904

Samuel R. Brown
 Secretary of Internal Affairs.